



Powering Business Worldwide

SHOP DRAWING/SUBMITTAL REVIEW

☒ APPROVED ☐ APPROVED AS NOTED

☐ REVISE AND RESUBMIT ☐ REJECTED

By: *Jose Dominguez* Date: 10/19/23




Powering Business Worldwide

Master Document Index

Switchboards PRLC Switchboard

	Drawing Description	Document Name	Rev
1	Master Drawing List	S00URJ2-M.DOC	3
2	Assembly	S00URJ2-A.PDF	2
3	Customer Outline	S00URJ2-O.DWG	4
4	Unit Schedule	S00URJ2-N.DWG	3
5	Wiring Schematic	S00URJ2-S1.DWG	3
6	Wiring Schematic	S00URJ2-S2.DWG	2
7	Wiring Schematic	S00URJ2-S3.DWG	2
8	WIRING DIAGRAM, SPD FOR SWITCHBOARD MAIN SECTION	1A32465.DWG	17
9	PXM1000/3000 METER 480Y/277, 208Y/120V	WD19A016.DWG	06

User Eric Redding		Date 10/18/2023 4:20:59 PM		THE INFORMATION ON THIS DOCUMENT WAS CREATED BY EATON CORPORATION. IT WAS DISCLOSED IN CONFIDENCE AND IS ONLY TO BE USED FOR THE PURPOSE IN WHICH IT WAS SUPPLIED.		 Powering Business Worldwide			
				AV540419X3K1					
				Approval Drawings					
REVISION		DWG SIZE		G.O.		DWG		SHEET	
3		A		LJV0034143-001		S00URJ2-M.DOC		1 of 1	

Switchboard General Information

Pow-R-Line C - Specifications

Quantity: 1

Alignment: Front Access/ Front and Rear Align

Service: 480Y/277V 3-Phase 4-Wire

Minimum Interrupt Rating: 50 kA

Bus Specifications

Bus Amps: 2000

Bus Bracing Rating: 65kA

Neutral Amps: 2000

Bus Material: Silver Plated Copper

Heat Test

Ground Bus Material: Silver Plated Copper Ground Bus Bolted To Frame, (1) #6-350 kcmil Ground Lug

Incoming Information

Incoming Qty & Size: Terminals, Mechanical, (6) #4-500 kcmil, Top

Structure Specifications

Non Service Entrance

Enclosure Type: Type 1

Heater package - (CPT, heater, thermostat, fused disconnect)

Special Notes

Qty Description

Catalog Number

Enclosure properties

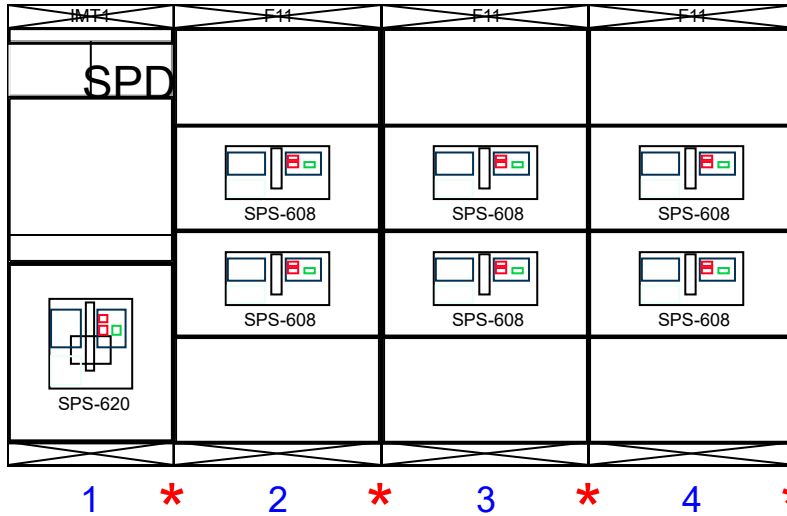
Struct #

Description/Modifications

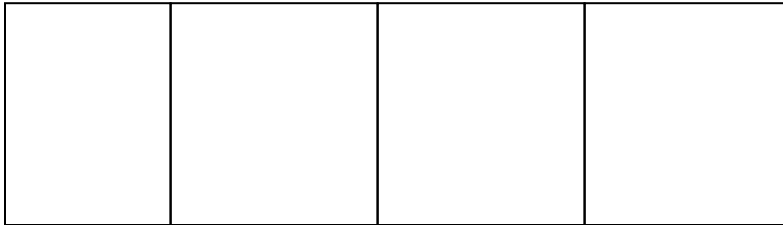
1	Top incoming main device (Incoming Main Device/MLO Section)
2	Two individually mounted feeder BREAKERS (3000A max) (Feeder Structure)
3	Two individually mounted feeder BREAKERS (3000A max) (Feeder Structure)
4	Two individually mounted feeder BREAKERS (3000A max) (Feeder Structure)

The information on this document is created by Eaton Corporation. It is disclosed in confidence and it is only to be used for the purpose in which it is supplied.

PREPARED BY	DATE	Eaton SumterSC			
ERIC T REDDING	7/19/2023				
APPROVED BY	DATE	JOB NAME	JEA 1411202246		
		DESIGNATION			
VERSION		TYPE	DRAWING TYPE		
9.0.32.0		Switchboards	CustAppr		
NEG-ALT Number	REVISION	DWG SIZE	G.O.	ITEM	SHEET
AV540419X3K1-0001	0	DwgA	LJV0034143	001	1 of 4



Rear
Floor Plan



Total of 4 Structures, Total Weight of 4548 Weight-Lbs.
Total of 4 Structures, Total Width of 171 Inches

Structure	1	2	3	4		
BusLoc						
Ship-Inches	36.00	45.00	45.00	45.00		
Ship-MM	914	1143	1143	1143		
Width-Inches	36.00	45.00	45.00	45.00		
Width-MM	914	1143	1143	1143		
Depth(Inner)-In.	48.00	48.00	48.00	48.00		
Depth(Inner)-MM	1219	1219	1219	1219		
Depth(Outer)-In.	48.00	48.00	48.00	48.00		
Depth(Outer)-MM	1219	1219	1219	1219		
Height-Inches	90.00	90.00	90.00	90.00		
Height-MM	2286	2286	2286	2286		
Weight-Lbs.(Est.)	744	1268	1268	1268		
Weight-Kg.(Est.)	337	575	575	575		

The information on this document is created by Eaton Corporation. It is disclosed in confidence and it is only to be used for the purpose in which it is supplied.	PREPARED BY	DATE	Eaton SumterSC			
	ERIC T REDDING	7/19/2023				
	APPROVED BY	DATE	JOB NAME	JEA 1411202246		
			DESIGNATION			
	VERSION		TYPE		DRAWING TYPE	
	9.0.32.0		Switchboards		CustAppr	
NEG-ALT Number	REVISION	DWG SIZE	G.O.	ITEM	SHEET	
AV540419X3K1-0001	0	DwgA	LJV0034143	001	2 of 4	

Switchboard Units Information

Str#	Unit	Description/Modifications	Nameplate
1		<p>Main Breaker - Ind Mtd-2000A 3P Power Defense SB Brkr SPS-620 [Drawout-Electric], Trip 2000A., PXR20 LSIG w/ARMS and Modbus RTU, 100 % rated ARMS Operation - Local using blue light / switch on face of Switchboard Terminals, Mechanical, (6) #4-500 kcmil, Top Shunt Trip: 100-127Vac/Vdc Auxiliary Switch: 4 Form C Control switch w/ indicating lights for electrically operated breaker Neutral Terminal, (6) #4-500 kcmil Blank Cover -3 Inches</p> <p>Blank Cover -30 Inches</p> <p>PXM1000 Meter, 2000 Amp CTs, with Display</p> <p>SPD Series 250kA SPD, Standard w/ Surge Counter, w/ Fusible Disconnect</p>	
2		<p>Feeder Breaker - Ind Mtd-800A 3P Power Defense SB Brkr SPS-608 [Drawout-Electric], Trip 400A., PXR20 LSIG, 100 % rated Terminals, Mechanical, (3) 500-750 kcmil, Top Shunt Trip: 100-127Vac/Vdc Auxiliary Switch: 4 Form C Control switch w/ indicating lights for electrically operated breaker Feeder Breaker - Ind Mtd-800A 3P Power Defense SB Brkr SPS-608 [Drawout-Electric], Trip 800A., PXR20 LSIG, 100 % rated Terminals, Mechanical, (3) 500-750 kcmil, Top Shunt Trip: 100-127Vac/Vdc Auxiliary Switch: 4 Form C Control switch w/ indicating lights for electrically operated breaker Blank Cover -21 Inches</p> <p>Blank Cover -23 Inches</p>	
3		<p>Feeder Breaker - Ind Mtd-800A 3P Power Defense SB Brkr SPS-608 [Drawout-Electric], Trip 600A., PXR20 LSIG, 100 % rated Terminals, Mechanical, (3) 500-750 kcmil, Top Shunt Trip: 100-127Vac/Vdc Auxiliary Switch: 4 Form C Control switch w/ indicating lights for electrically operated breaker Feeder Breaker - Ind Mtd-800A 3P Power Defense SB Brkr SPS-608 [Drawout-Electric], Trip 600A., PXR20 LSIG, 100 % rated Terminals, Mechanical, (3) 500-750 kcmil, Top Shunt Trip: 100-127Vac/Vdc Auxiliary Switch: 4 Form C Control switch w/ indicating lights for electrically operated breaker Blank Cover -21 Inches</p> <p>Blank Cover -23 Inches</p>	
4			

The information on this document is created by Eaton Corporation. It is disclosed in confidence and it is only to be used for the purpose in which it is supplied.	PREPARED BY		DATE	EatonSumterSC		
	ERIC T REDDING		7/19/2023			
	APPROVED BY		DATE	JOB NAMEJEA 1411202246		
				DESIGNATION		
	VERSION		TYPE		DRAWING TYPE	
	9.0.32.0		Switchboards		CustAppr	
NEG-ALT Number	REVISION	DWG SIZE		G.O.	ITEM	SHEET
AV540419X3K1-0001	0	DwgA		LJV0034143	001	3 of 4

Feeder Breaker - Ind Mtd-800A 3P Power Defense SB Brkr SPS-608 [Drawout-Electric], Trip
400A., PXR20 LSIG, 100 % rated
Terminals, Mechanical, (3) 500-750 kcmil, Top
Shunt Trip: 100-127Vac/Vdc
Auxiliary Switch: 4 Form C
Control switch w/ indicating lights for electrically operated breaker
Feeder Breaker - Ind Mtd-800A 3P Power Defense SB Brkr SPS-608 [Drawout-Electric], Trip
600A., PXR20 LSIG, 100 % rated
Terminals, Mechanical, (3) 500-750 kcmil, Top
Shunt Trip: 100-127Vac/Vdc
Auxiliary Switch: 4 Form C
Control switch w/ indicating lights for electrically operated breaker
Blank Cover -21 Inches

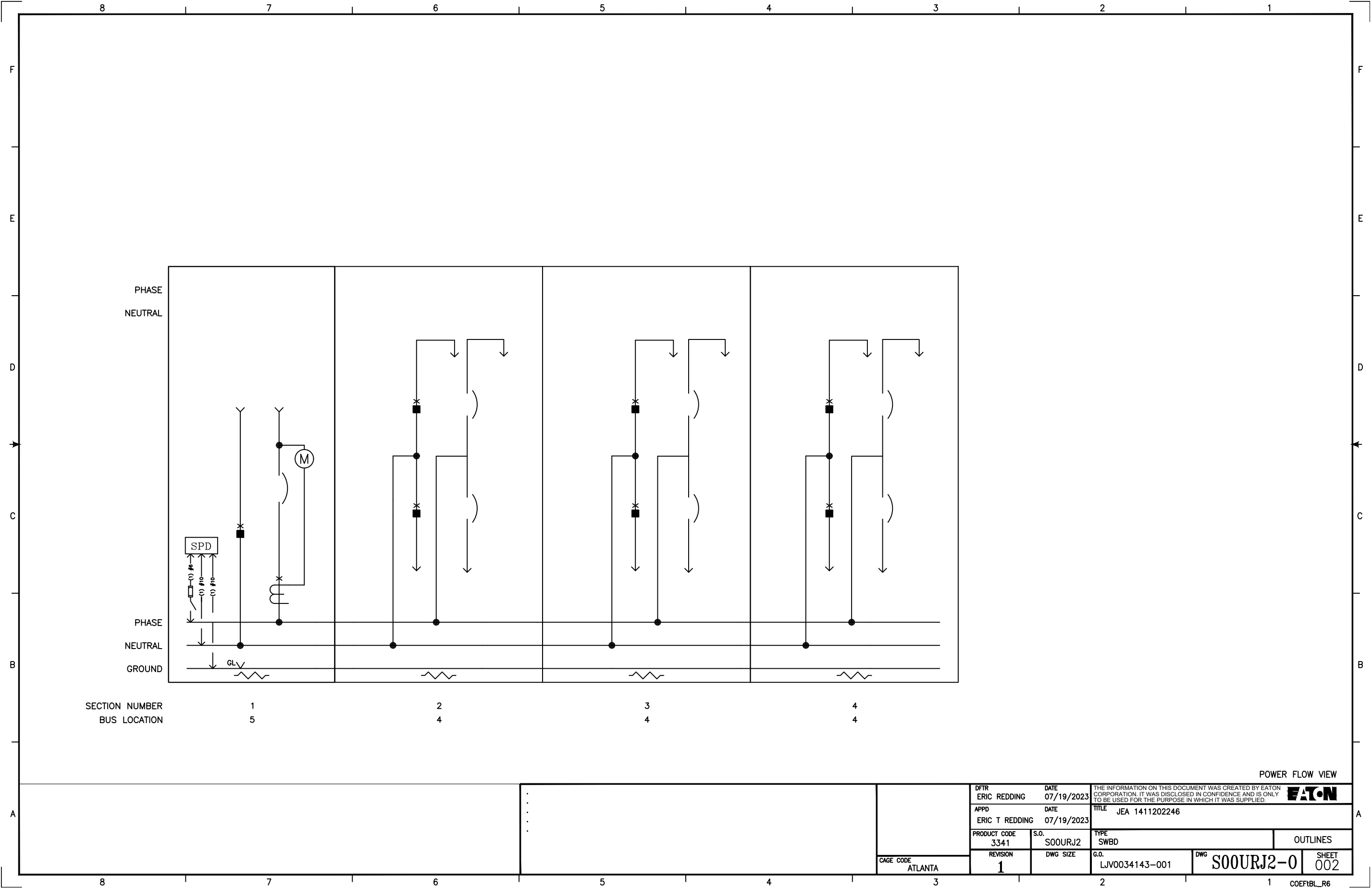
Blank Cover -23 Inches

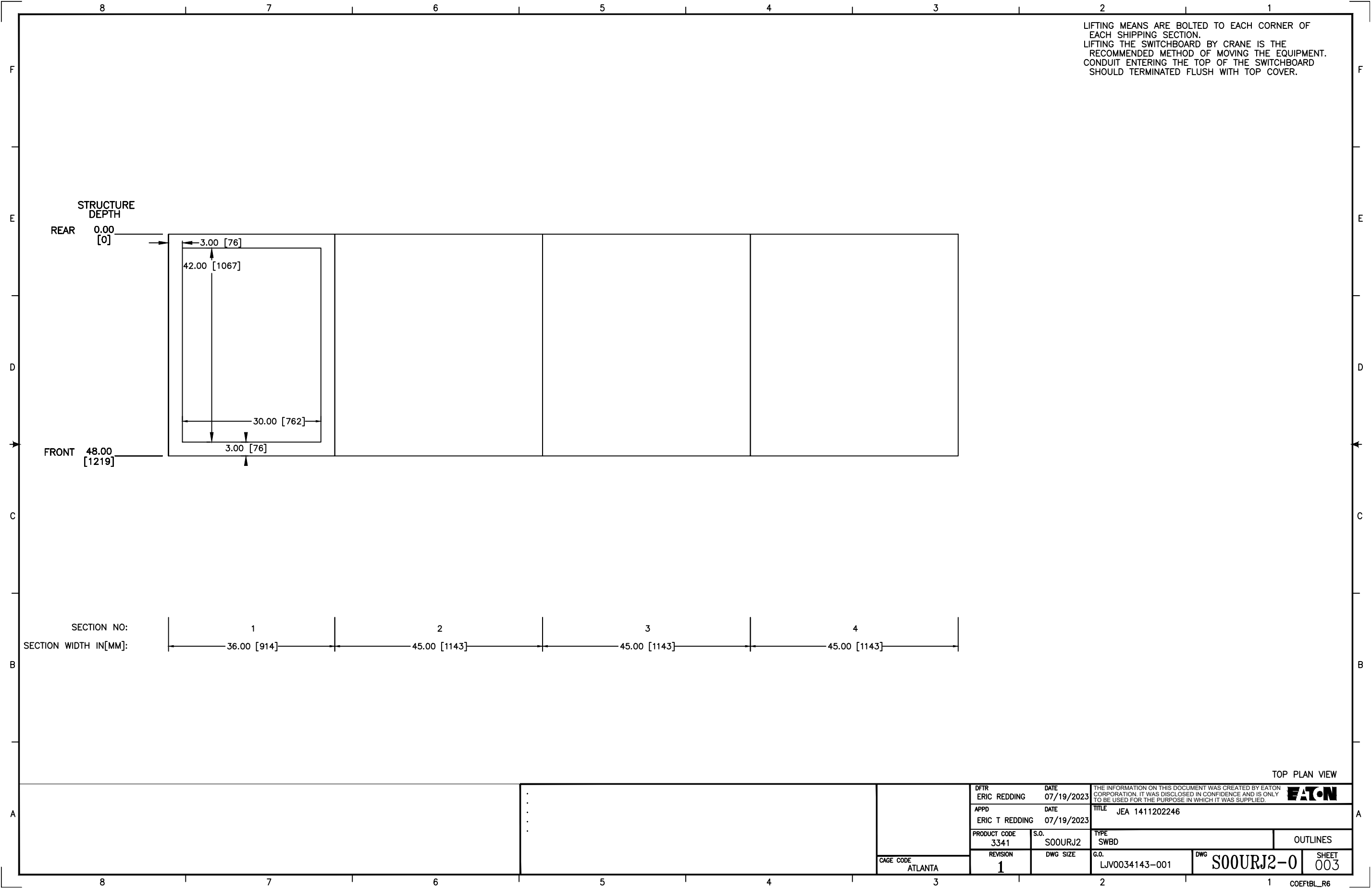
The information on this document is created by Eaton Corporation. It is disclosed in confidence and it is only to be used for the purpose in which it is supplied.	PREPARED BY		DATE	EatonSumterSC		
	ERIC T REDDING		7/19/2023			
	APPROVED BY		DATE	JOB NAME	JEA 1411202246	
				DESIGNATION		
	VERSION		TYPE		DRAWING TYPE	
	9.0.32.0		Switchboards		CustAppr	
NEG-ALT Number	REVISION	DWG SIZE	G.O.	ITEM	SHEET	
AV540419X3K1-0001	0	DwgA	LJV0034143	001	4 of 4	

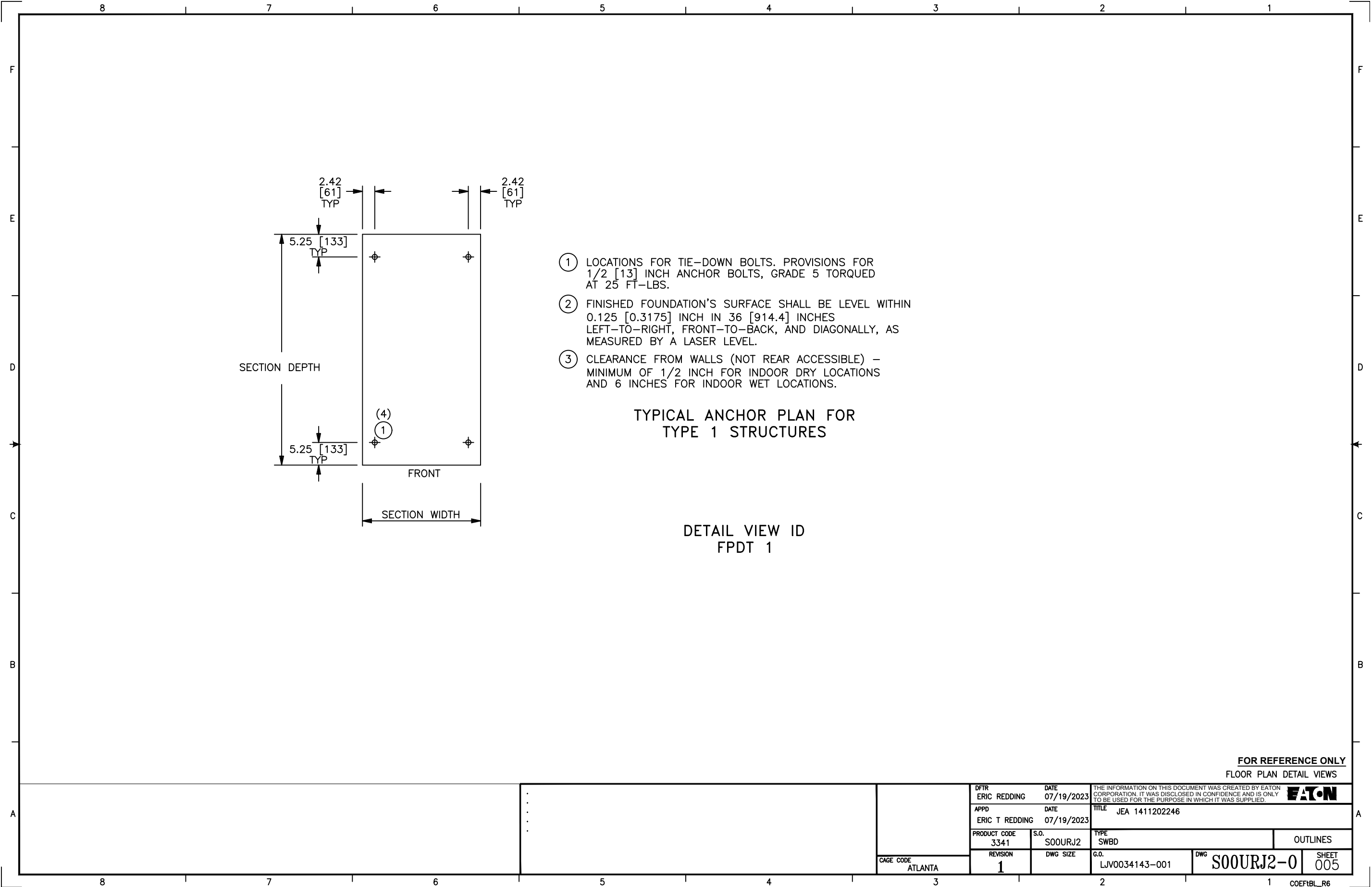
REVISION STATUS		SHEET DESCRIPTION
SHEET	REV	
000	1	REVISION SHEET
001	1	FRONT VIEW; SECTIONS: 1–4
002	1	POWER FLOW VIEW; SECTIONS: 1–4
003	1	TOP PLAN VIEW; SECTIONS: 1–4
004	1	FLOOR PLAN VIEW; SECTIONS: 1–4
005	1	FLOOR PLAN DETAIL VIEWS: SECTIONS: 1

REVISION HISTORY				
REV	REVISION DESCRIPTION	BY	APPD	DATE
1	CREATED	ER	ETR	7/19/2023

										REVISION SHEET		
.		DFTR DATE		THE INFORMATION ON THIS DOCUMENT WAS CREATED BY EATON CORPORATION. IT WAS DISCLOSED IN CONFIDENCE AND IS ONLY TO BE USED FOR THE PURPOSE IN WHICH IT WAS SUPPLIED.				
						ERIC REDDING 07/19/2023						
						APPD DATE		TITLE				
						ERIC T REDDING 07/19/2023		JEA 1411202246				
		PRODUCT CODE		S.O.		TYPE			OUTLINES			
		3341		S00URJ2		SWBD						
CAGE CODE ATLANTA		REVISION 1		DWG SIZE		G.O. LJV0034143-001		DWG S00URJ2-0		SHEET 000		







FF

E

E

D

D

C

C

B

B

A

A

8 7 6 5 4 3 2 1 COEFIDL_R6

SECTION NUMBER		ID	DEVICE INFORMATION																TERMINATION INFORMATION						ADDITIONAL ACCESSORIES, FEATURES, DETAILED DRAWING, CATALOG NUMBER & NOTES		
UNIT ID	CIRCUIT NAMEPLATE	DEVICE TYPE	DEVICE SIZE (AMPS)	POLES	KAIC RATING	100% RATED	TRIP TYPE	TRIP UNIT PROTECTION	TRIP RATING (AMPS)	ELECTRICALLY OPERATED	DRAWOUT	SHUNT TRIP (OPEN COIL)	AUXILIARY SWITCH	BREAKER CELL POSITION SWITCH	BELL ALARM (OTS)	KEY INTERLOCK	ACCESSORIES (SEE ACCESSORY CHART)	PHASE/NEUTRAL				GROUND					
																		POWER CABLE ENTRY DIRECTION	PHASE & NEUTRAL LUG TYPE	ADDITIONAL PHASE & NEUT LUG SPECS	#LUGS PER PHASE AND NEUTRAL	PHASE & NEUTRAL LUG SIZE	GROUND LUG TYPE	ADDITIONAL GROUND LUG SPECS		#LUGS PER GROUND	GROUND LUG SIZE
1	T		INCOMING COMPARTMENT																PH: NT:	PH: NT:	PH: NT:	M		1	#6-350		
1	M		METERING & SPD															PXM 1000, CTS 2000A SPD SERIES, STANDARD W/ SURGE COUNTER 250KA MODBUS, ARMS,								SPD250480Y3C	
1	B		MAIN BREAKER POWER DEFENSE SB, CSPS-620	2000	3	65	Y	PXR20	LSIG	2000	Y	Y	100-127 VAC/VDC	4 NO/NC FORM C	N	N	N		TOP	PH:M NT:M	PH:6 NT:6	PH:4-500 NT:#4-500					
2			STRUCTURE																								
2			FEEDER BREAKER POWER DEFENSE SB, CSPS-608	800	3	65	Y	PXR20	LSIG	800	Y	Y	100-127 VAC/VDC	4 NO/NC FORM C	N	N	N		TOP	PH:M NT:M	PH:3 NT:3	PH:500-750 NT:500-750					
2			FEEDER BREAKER POWER DEFENSE SB, CSPS-608	800	3	65	Y	PXR20	LSIG	400	Y	Y	100-127 VAC/VDC	4 NO/NC FORM C	N	N	N		TOP	PH:M NT:M	PH:3 NT:3	PH:500-750 NT:500-750					
3			STRUCTURE																								
3			FEEDER BREAKER POWER DEFENSE SB, CSPS-608	800	3	65	Y	PXR20	LSIG	600	Y	Y	100-127 VAC/VDC	4 NO/NC FORM C	N	N	N		TOP	PH:M NT:M	PH:3 NT:3	PH:500-750 NT:500-750					
3			FEEDER BREAKER POWER DEFENSE SB, CSPS-608	800	3	65	Y	PXR20	LSIG	600	Y	Y	100-127 VAC/VDC	4 NO/NC FORM C	N	N	N		TOP	PH:M NT:M	PH:3 NT:3	PH:500-750 NT:500-750					
4			STRUCTURE																								
4			FEEDER BREAKER POWER DEFENSE SB, CSPS-608	800	3	65	Y	PXR20	LSIG	600	Y	Y	100-127 VAC/VDC	4 NO/NC FORM C	N	N	N		TOP	PH:M NT:M	PH:3 NT:3	PH:500-750 NT:500-750					
4			FEEDER BREAKER POWER DEFENSE SB, CSPS-608	800	3	65	Y	PXR20	LSIG	400	Y	Y	100-127 VAC/VDC	4 NO/NC FORM C	N	N	N		TOP	PH:M NT:M	PH:3 NT:3	PH:500-750 NT:500-750					

1M

1B

2B

3B

4B

NOTES:

TERMINATIONS

M = MECHANICAL CU/AL

MC = MECHANICAL COPPER ONLY

C = COMPRESSION TYPE

CP = COMPRESSION TYPE PROVISIONS

BD = BUS DUCT

PB = PRESS BOLTS

D = DRILLINGS

P = PROVISIONS

TRIP UNIT PROTECTION

TM = THERMAL MAGNETIC

LS = LONG DELAY, SHORT DELAY

LSI = LONG DELAY, SHORT DELAY, INSTANTANEOUS

LSG = LONG DELAY, SHORT DELAY, GROUND FAULT PROTECTION

LSIG = LONG DELAY, SHORT DELAY, INSTANTANEOUS, GROUND FAULT PROTECTION

LSA = LONG DELAY, SHORT DELAY, GROUND FAULT ALARM ONLY

LSIA = LONG DELAY, SHORT DELAY, INSTANTANEOUS, GROUND FAULT ALARM ONLY

ALSI = ARCFLASH REDUCTION MAINTENANCE SYSTEM, LONG DELAY, SHORT DELAY, INSTANTANEOUS

ALSIA = ARCFLASH REDUCTION MAINTENANCE SYSTEM, LONG DELAY, SHORT DELAY, INSTANTANEOUS, GROUND FAULT ALARM ONLY

ALSIG = ARCFLASH REDUCTION MAINTENANCE SYSTEM, LONG DELAY, SHORT DELAY, INSTANTANEOUS, GROUND FAULT PROTECTION

ADDITIONAL LUG SPECIFICATIONS

1H = 1 HOLE

2H = 2 HOLE

CU = COPPER ONLY

ACCESSORY CHART

OC = OPERATIONS COUNTER

LC = LATCH CHECK SWITCH

PAD = PADLOCKABLE HASP

PPAD = PROV. PADLOCKABLE HASP (DOES NOT SHIP)

NPAD = NONPADLOCKABLE

UVR = UNDERVOLTAGE RELEASE

MO = MOTOR OPERATOR

ZSI = ZONE SELECTIVE INTERLOCK

ARMS = ARC FLASH REDUCTION MAINTENANCE

GFA = GROUND FAULT ALARM

HLA = HIGH LOAD ALARM

ACCESSORY CHART CONTINUED

BFTON = BLOWN FUSE, TRIP, LIGHTS NORMALLY ON

BFTOFF = BLOWN FUSE, TRIP, LIGHTS NORMALLY OFF

BFTNL = BLOWN FUSE, TRIP WITHOUT LIGHTS

BFDON = BLOWN FUSE, DETECTION, LIGHTS NORMALLY ON

BFDOFF = BLOWN FUSE, DETECTION, LIGHTS NORMALLY OFF

ZGFP = ZERO SEQUENCE GROUND FAULT PROTECTION

SPP = SINGLE PHASE PROTECTION

RELAY = RELAYS FOR PXR TRIP UNIT

MODBUS = MODBUS FOR PXR TRIP UNIT

GFP = GROUND FAULT PROTECTION FOR PRINGLE SWITCH

UNIT SCHEDULE

DFTR

ERIC REDDING

DATE

07/19/2023

APPD

ERIC T REDDING

DATE

07/19/2023

PRODUCT CODE

3341

S.O.

S00URJ2

REVISION

1

DWG SIZE

THE INFORMATION ON THIS DOCUMENT WAS CREATED BY EATON CORPORATION. IT WAS DISCLOSED IN CONFIDENCE AND IS ONLY TO BE USED FOR THE PURPOSE IN WHICH IT WAS SUPPLIED.

EATON

TITLE

JEA 1411202246

TYPE

SWBD

SCHEDULES

G.O.

LJV0034143-001

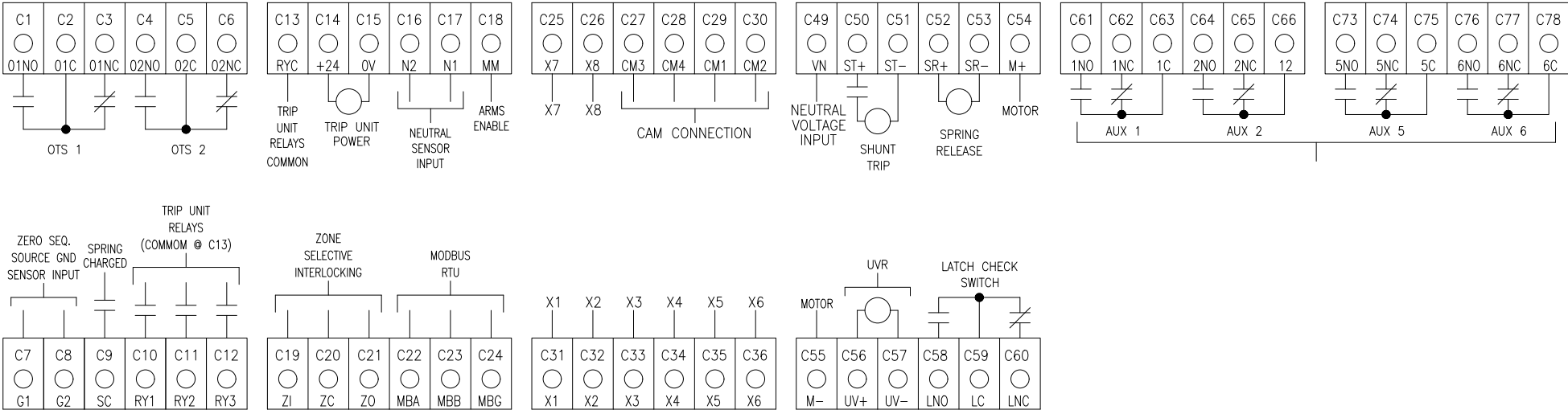
DWG

S00URJ2-N

SHEET

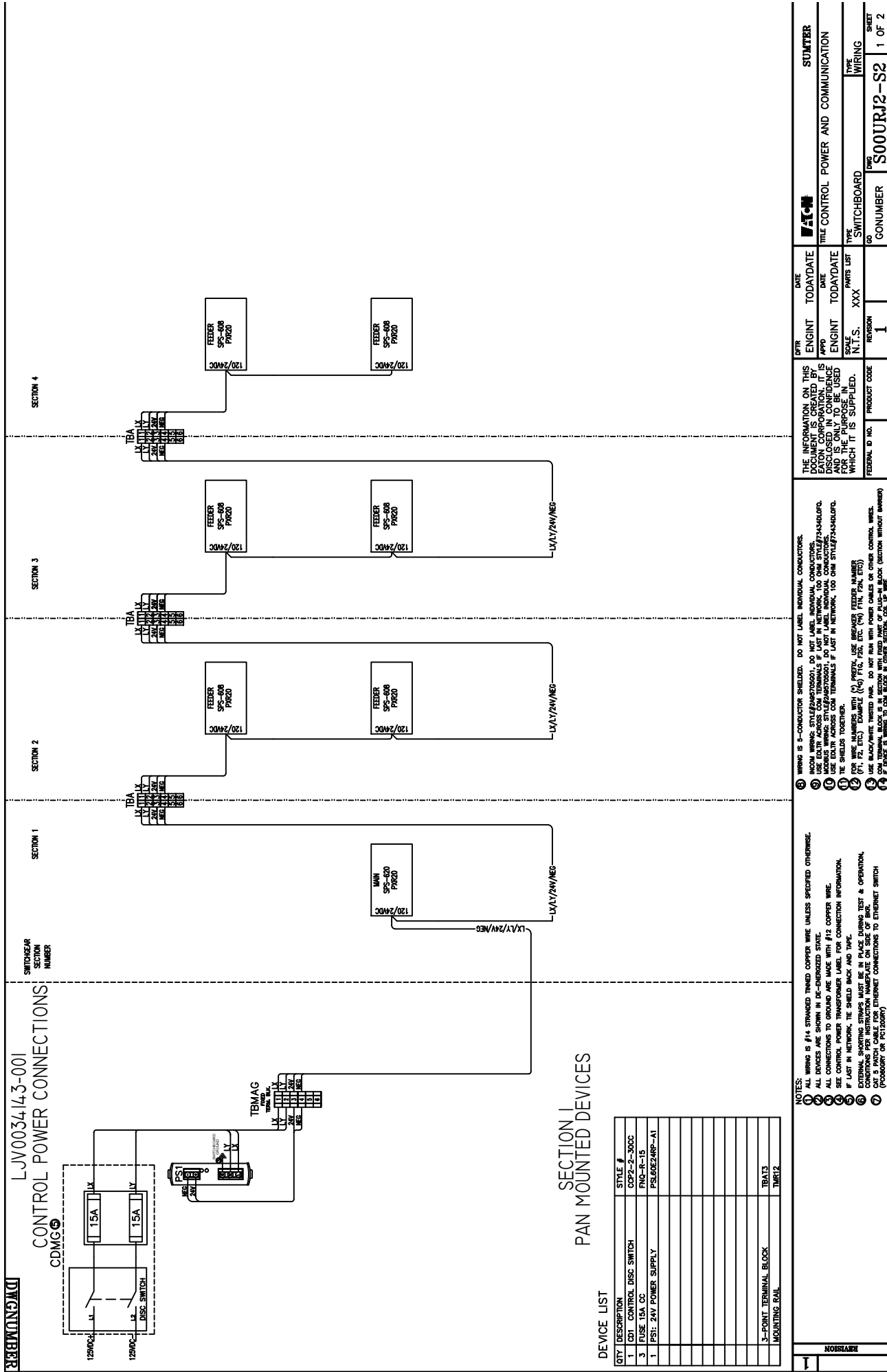
001

MAGNUM PXR BREAKER
SECONDARY TERMINAL BLOCKS



NOTE: ALL UNUSED BLOCKS WILL BE BLANK FILLERS

0	REVISION		THE INFORMATION ON THIS DOCUMENT IS CREATED BY EATON CORPORATION. IT IS DISCLOSED IN CONFIDENCE AND IS ONLY TO BE USED FOR THE PURPOSE IN WHICH IT IS SUPPLIED.	DFTR		DATE		EATON		SUMTER, SC	
				JWN		11/9/22					
				APPD		DATE		TITLE			
				JWN		11/9/22		MAGNUM BREAKER TERMINAL BLOCK LAYOUT PXR, LSI/LSIG, 8 FORM C AUX. SWITCH			
				SCALE		PARTS LIST		TYPE			
				N.T.S.				SWITCHBOARD			
				FEDERAL ID NO.		PRODUCT CODE		REVISION		SHEET	
								1		1 OF 1	
								GO		DWG	
								LJV0031413		S00URJ2-S1	



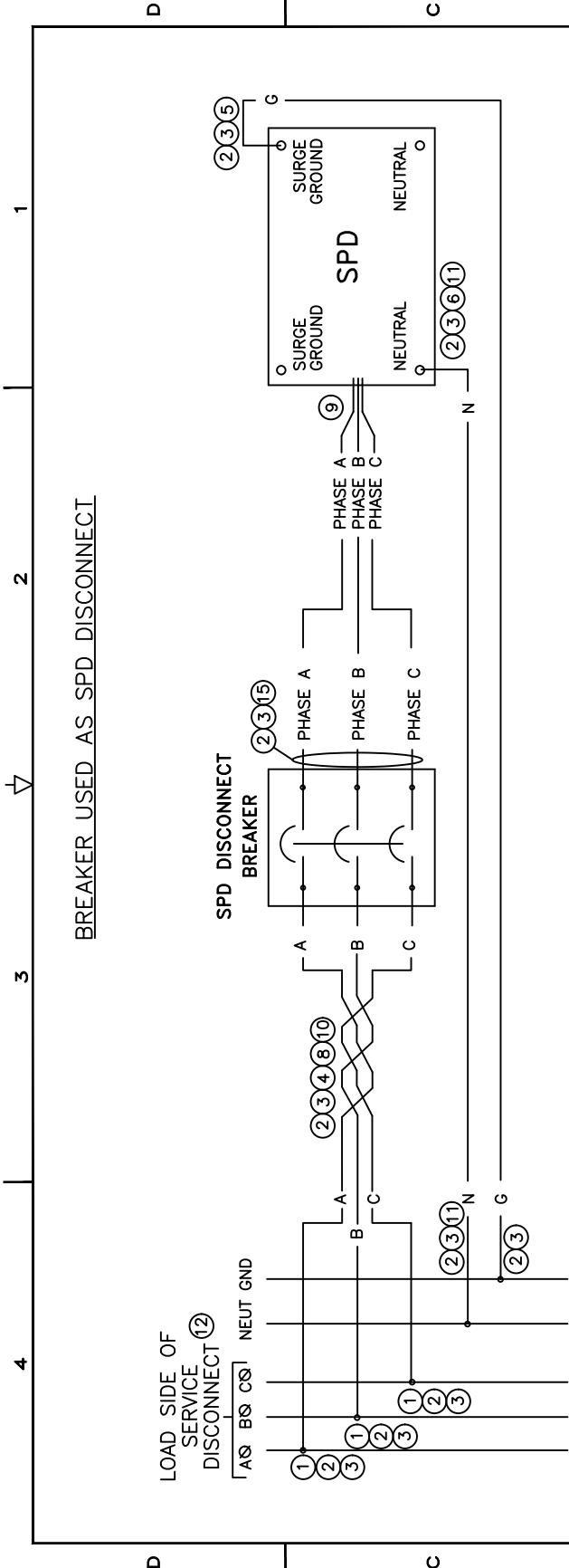
ET 2

LOAD SIDE OF
SERVICE DISCONNECT¹²



- | WIRING COMPONENTS | | |
|-------------------|------------|---|
| QTY | STYLE# | DESCRIPTION |
| 1 | | SPD UNIT PER GO/ITEM BILL OF MATERIAL |
| 1 | | SPD DISCONNECT – FUSIBLE DISCONNECT AS PER NOTE 13 |
| | | WIRE, #6 TWISTED FOR BREAKER TO LOAD BUS CONNECTION |
| 3 | 42C3905501 | LUG, (2) #14-1/0 |
| | 3305B02H03 | LUG, GRAY #10 FOR NEUTRAL CONNECTION |
| | 62111HT3CP | WIRE, GREEN #10 FOR GROUND CONNECTION |
| | 62111HT5A4 | WIRE, GREEN #10 FOR GROUND CONNECTION |
| 2 | 1A32258H25 | RING TERMINAL, INSULATED, 10GA WIRE, #10 |
| | | FERRULE, WEIDMULLER #10 WIRE END, YELLOW |
| 3 | 9019220000 | FERRULE, WEIDMULLER #10 WIRE END, YELLOW |
| | 73482CF00M | CLASS CC FUSES, 30A, PER NOTE 13 |
| | 1A32258H21 | DIN RAIL |

HEAD_ACAD_FRM1C1
REV. 06/04/08



NOTES:

- 1.) UTILIZE STYLE# 3305B02H03 LUG ON EXISTING BUS CONNECTION.
- 2.) SELECT **CLOSEST TERMINATION POINT AVAILABLE**. CUT WIRE TO **SHORTEST POSSIBLE LENGTH**.
- 3.) REFER TO 1A32012 FOR TORQUE REQUIREMENTS ON WIRE CONNECTIONS. UTILIZE BOSCH CORDLESS DRIVER, MODEL PS20, TO TORQUE #6 & #10 WIRE CONNECTIONS. ADDITIONAL TORQUE CHECK UTILIZING APPROPRIATE TORQUE WRENCH REQUIRED ON 100% OF THESE APPLICATIONS.
- 4.) UTILIZE STYLE# 42C3905G01 #6 TWISTED WIRE.
- 5.) UTILIZE STYLE# 6211HT5A4 GREEN WIRE (#10) AND STYLE # 1A32258H25 RING TERMINAL FOR GROUND CONNECTION. ONLY ONE SURGE GROUND CONNECTION AT SPD IS REQUIRED.
- 6.) UTILIZE STYLE# 6211HT3CP GRAY WIRE (#10) AND STYLE # 1A32258H25 RING TERMINAL FOR NEUTRAL CONNECTION. ONLY ONE NEUTRAL CONNECTION AT SPD IS REQUIRED.
- 7.) UTILIZE PROTECTIVE EDGING AS REQUIRED TO PROTECT WIRE FROM SHARP EDGES.
- 8.) FOR SINGLE PHASE APPLICATIONS, REMOVE B-PHASE BREAKER LUGS AND TAPE OFF. B-PHASE #6 WIRE AT BOTH ENDS.
- 9.) FOR SINGLE PHASE APPLICATIONS, B-PHASE SPD MAIN WIRE CONNECTOR IS OMITTED BY SUPPLIER.
- 10.) MAINTAIN ORIGINAL TWISTING OF WIRE THROUGHOUT RUN TO FURTHEST POSSIBLE POINT AT ALL LUG TERMINATIONS.
- 11.) FOR 3 PHASE 3 WIRE APPLICATIONS, OMIT NEUTRAL CONNECTION.
- 12.) FOR SIX DISCONNECT RULE APPLICATIONS, TAP VOLTAGE ON LINE BUS.
- 13.) 100K AIC OR LESS USE 30 AMP, 3 POLE F-FRAME OR PD2 MOLDED CASE CIRCUIT BREAKER, SUITABLE FOR SYSTEM VOLTAGE, AND SHORT CIRCUIT RATING. (ex. XXX3030L/P0623, 0030TFF)
- 14.) MORE THAN 100K AIC USE 100 AMP, 3 POLE F FRAME MOLDED CASE SWITCH, SUITABLE FOR SYSTEM VOLTAGE, AND SHORT CIRCUIT RATING. (ex. XX3100KL)
- 15.) STRIP WIRE PER REQUIREMENT SET BY CRIMPING TOOL. CRIMP WEIDMULLER WIRE END FERRULE ONTO SPD #10 PHASE WIRE USING WEIDMULLER PZ6 CRIMPING TOOL.

WIRING COMPONENTS	
QTY	STYLE# DESCRIPTION
1	SPD UNIT PER GO/ITEM BILL OF MATERIAL
1	SPD DISCONNECT BREAKER PER NOTE 13 & 14
3	42C3905G01 WIRE, #6 TWISTED FOR BREAKER TO LOAD BUS CONNECTION
3	3305B02H03 LUG, (2) #14-1/0
3	6211HT3CP WIRE, GREEN #10 FOR NEUTRAL CONNECTION
2	1A32258H25 RING TERMINAL, INSULATED, 10GA WIRE, #10
3	9019220000 FERRULE, WEIDMULLER #10 WIRE END, YELLOW

ALL REV. NOTES & SYMBOL REFERENCES ARE LISTED ON SHEET 1

REV. NO. 1A32465

DATE 08/04/08

BY 1A32465

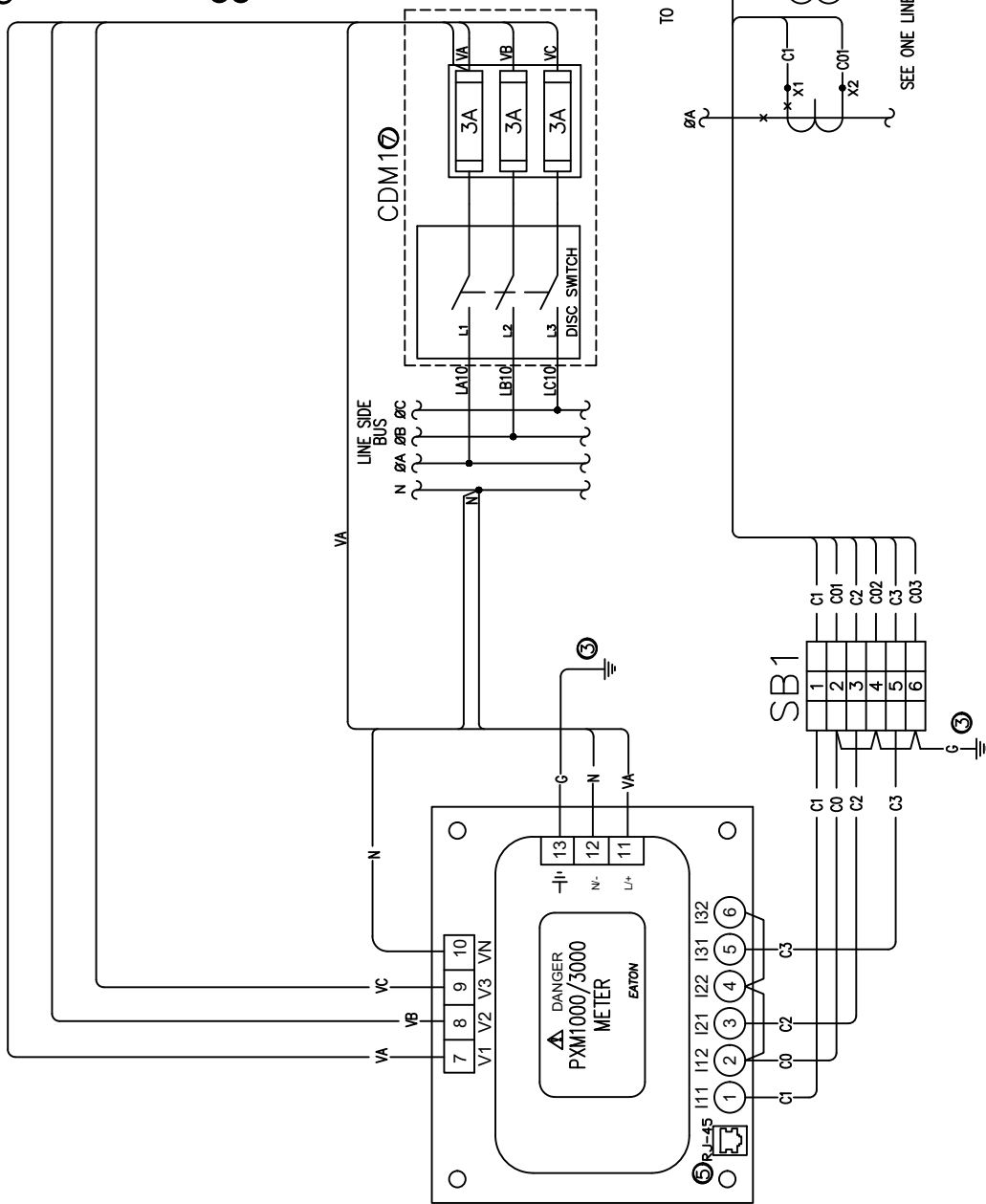
1

1A32465

SPD WIRING SWITCHBOARD

2 OF 2

DEVICE LIST		
QTY	DESCRIPTION	STYLE NUMBER
1	CDM1 DISC/FB 3P COMBO	CCP2-3--30CC
3	3A FUSE	KTK-R-3
1	SBI: C.T. SHORTING BLOCK	22IC187H06
-	125 SERIES CT	7494A73H
-	RBL SERIES CT	8450C62H
-	195 SERIES CT	195--
-	568TL SERIES CT	568TL--
-	PXM1000 SERIES METER	PXM1_00MB15-1
-	PXM3000 SERIES METER	PXM3000MA15
-	I/O MODULE	PXM1K--
-	COM CARD	PXM1K-MTCP
-	COM CARD W/BACnet/IP	PXM1K-BIPP



6	REVISION	4	CHANGE DISCONNECT AND FUSE BLOCK PART NUMBER	2/4/22	5	CHANGE 1A FUSE TO 3A	6/17/22	6	CHANGED PART NUMBER OF METER	ABH 12/9/22	NOTES:	<p>1 ALL SECONDARY WIRING IS #14 STRANDED TINNED COPPER WIRE UNLESS SPECIFIED OTHERWISE.</p> <p>2 ALL DEVICES SHOWN IN DE-ENERGIZED OR IN RELAXED STATE</p> <p>3 ALL CONNECTIONS TO GROUND ARE MADE WITH #12 COPPER WIRE.</p> <p>4 SEE CONTROL POWER TRANSFORMER LABEL</p> <p>5 SEE CONTROL POWER TRANSFORMER WITH COM CARD ON PXM1000 SERIES ETHERNET PORT STANDARD ON PXM3000 SERIES</p> <p>6 COM CARD OPTION ONLY FOR PXM1000 SERIES</p> <p>7 COM CARD OPTION ONLY FOR PXM1000 SERIES</p> <p>8 SEE WJST #10222 FOR ACCEPTABLE SUBSTITUTIONS.</p> <p>9 SEE WJST #10222 FOR ACCEPTABLE SUBSTITUTIONS.</p>	<p>THE INFORMATION ON THIS DOCUMENT IS CREATED BY EATON CORPORATION. IT IS DISCLOSED IN CONFIDENCE FOR THE PURPOSE FOR WHICH IT IS SUPPLIED.</p>	<p>DPTR ABH 6/14/19</p> <p>APPRO ABH 6/14/19</p> <p>SCALE N.T.S.</p> <p>PARTS LIST XXX</p>	<p>DATE 6/14/19</p> <p>DATE 6/14/19</p> <p>TYPE SWITCHBOARD</p> <p>TYPE WIRING</p>	<p>TITLE PXM1000/3000 METER 480Y/277V OR 208Y/120V 3PH 4W</p>	<p>STANDARD</p> <p>WD19A016</p>	<p>GO</p> <p>REVISION 6</p> <p>DWG</p>	<p>SHEET 1</p>
---	----------	---	--	--------	---	----------------------	---------	---	------------------------------	-------------	--------	--	--	--	--	---	---------------------------------	--	----------------